

U Ó Ò Ò Ü X Ø ( Ò Ò Á Q Ú Ü Ü V Ø ð V Ò Ò

[illegible]

ÔU ÓÜŦ ÒƆ VU ÙÁÖËÁËŦ ŒWÜË

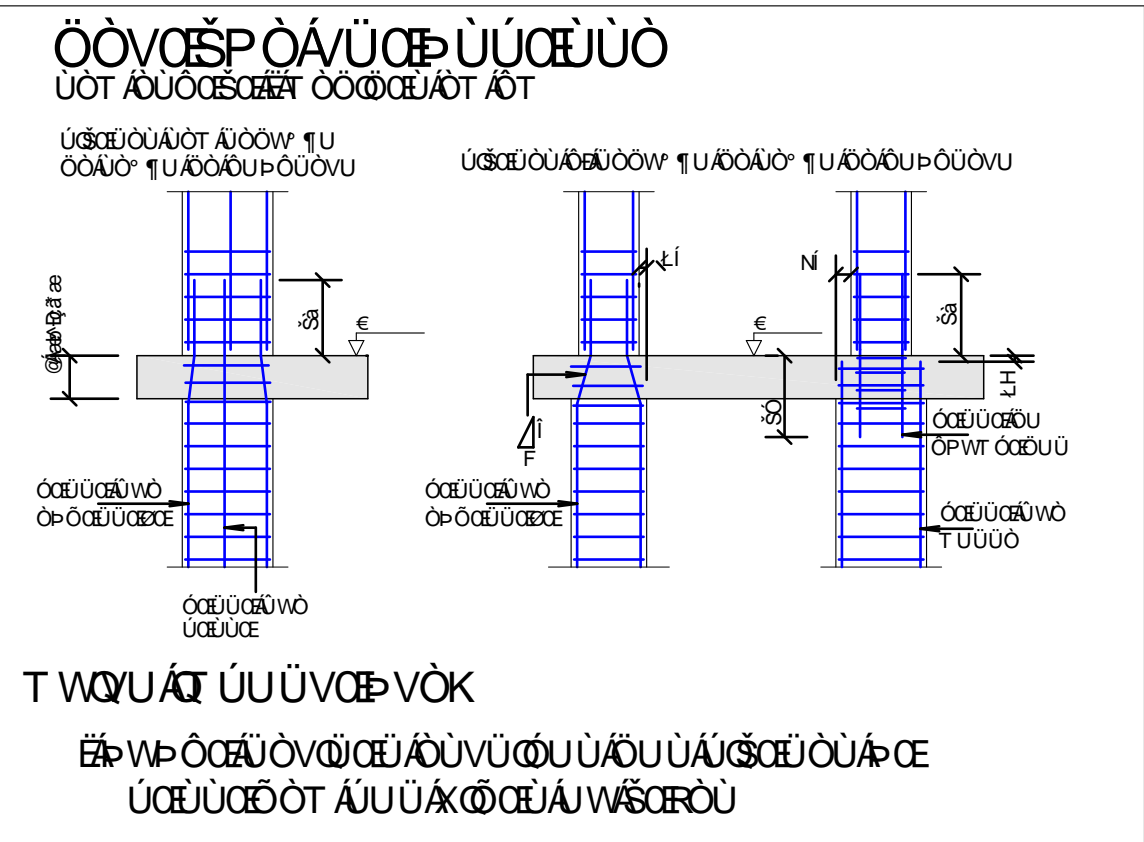
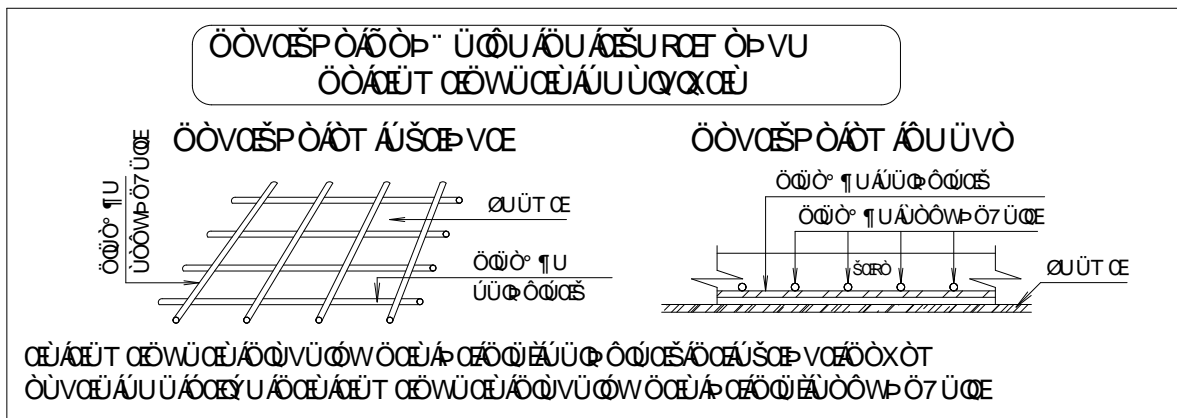
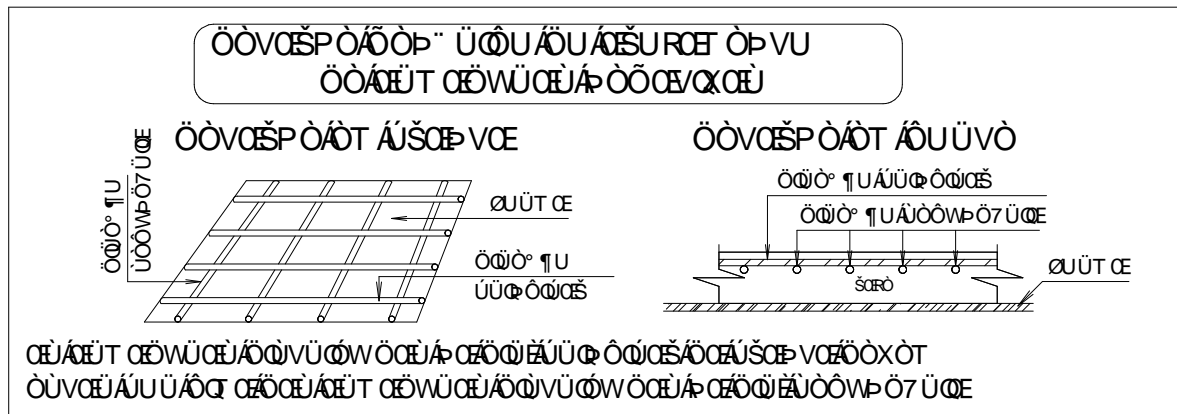
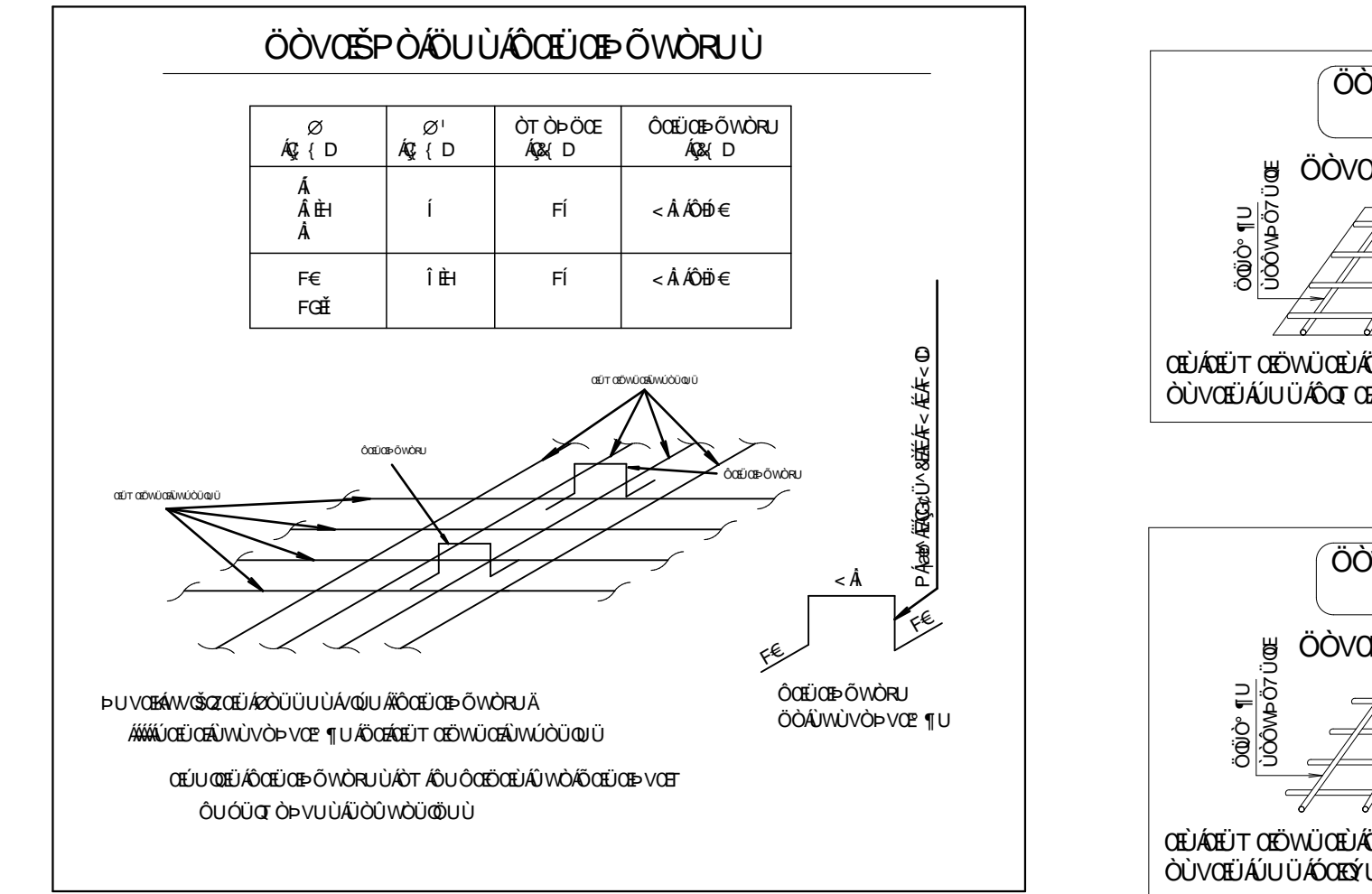
VCE UCAU' E' U SÖCÖCÖÜ ÜÜÜÜÜ	/ÄE /Ä/
ÖÜÜÜÜÜÜ	/Ä E/Ä/
SÖRÖÜ/ÖC/U ÖX ÖÜÜQE	T ÖUE /Ä E/Ä/
QAU'CF UCU	CIST CE /Ä E/Ä/
UCSCEÜÜ	/Ä E/Ä/
UCU/CB/ÜÜ	/Ä E/Ä/

Ua^!cas/\*K  
MMMMMMMMMM  
FZOU>PVUSOUWUUUU  
  
GZSUUOAOADUOUUAOWOAIF OQ>VOSAIOAET UUUOUAUOUOE  
HZZUPUDUUYEAOANT DUUSP OVUUAQA ZOUA PQAUAJESOEAEVWANT CE  
XODE VSOT AJLOOXOWEA QVWO\* ( OUEOQO AOAI ABUE

ÔŒÛœŦVòÜ ÙvQœÀÖUÙÁôUƧôÜòNvUÙ

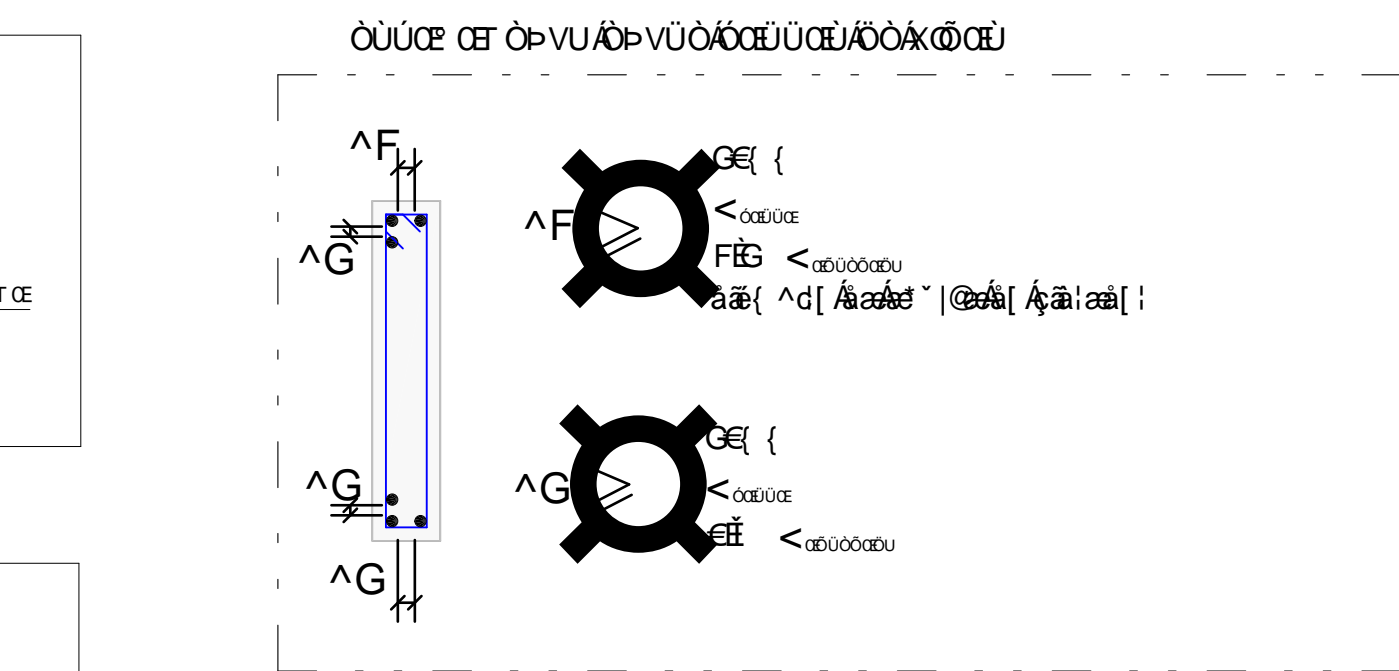
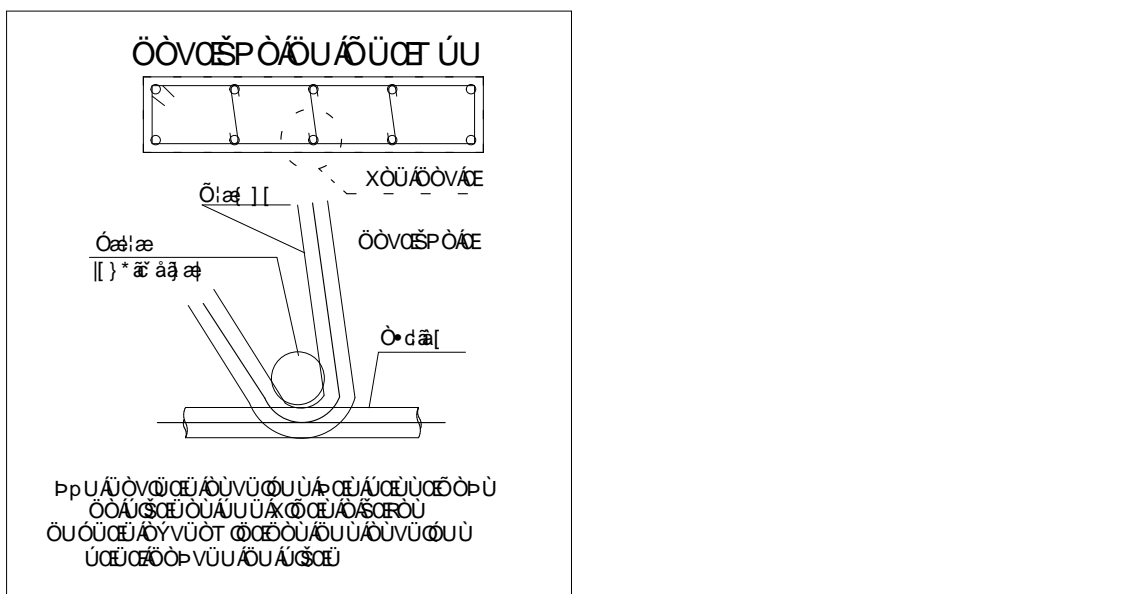
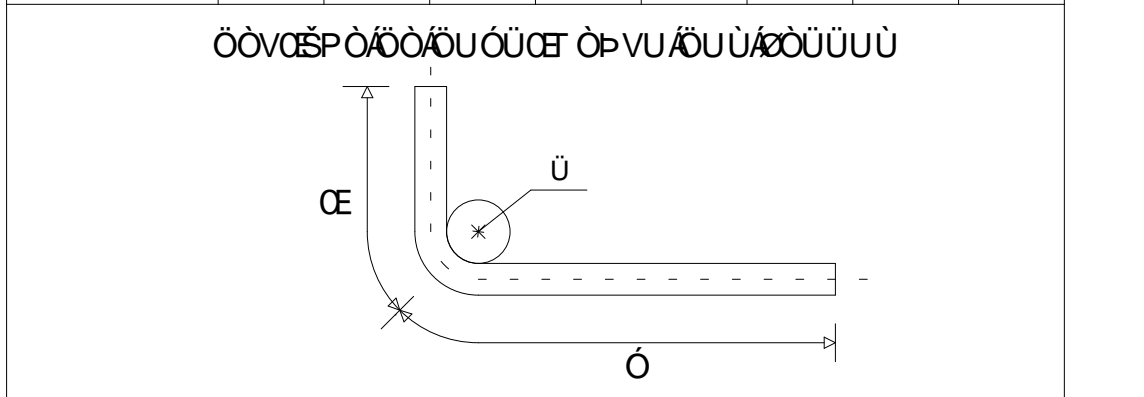
	00SGT#ID	000LM
00P00S00	AAA €	AAA€€ i
00000/00000 000	AAA €	AAA€€ i
0000000	AAA €	AAA€€ i
00000/000	AAA €	AAA€€ i

Uà^!çab/^•K  
MMMMMMMMMM  
FËÖYÖÖ° ( ÖÜK  
b¶UÄ7

[illegible]

ÖŒ T ÒVÜU ÙÁÖÒÁÖU ÓÜŒ ÒP VUÁÇ T D

ᑭᑦ ᑦ ᑦ	ᑭ	ᑭᑦ	ᑭ	ᑭᑦ	ᑭᑦ	ᑭ	ᑭᑦ	ᑭ
ᑭᑦᑭᑦᑭᑦ	ᑭᑦ	ᑭᑦ	ᑭᑦ	ᑭᑦ	ᑭᑦ	ᑭᑦ	ᑭᑦ	ᑭᑦ
ᑭᑦᑭᑦᑭᑦᑭᑦᑭᑦ	ᑭᑦ	ᑭᑦ	ᑭᑦ	ᑭᑦ	ᑭᑦ	ᑭᑦ	ᑭᑦ	ᑭᑦ

[illegible]

Š Ů Ō Œ ¶ Ů Ä Ů Û Á Ŭ Š Œ Ů Û

ÒÙÔÊÆƒƒƒƒƒ ÒÖÖÖÙÀÔ ÁÔT D

Ô Õ Ù Ö Ü  
T U Š Ů

œ ð ø é ÷ ù ü Û ù ù

ÚÒVŒÁÁÆÙÒŦÁÇÙÖÒT ÁËÔŦÞÆUÙ

ÚÒ ÑÇÄÖÝÒ ÑÒÐ ÑÒ

e					
ē					
a					
ai					
ei					
ee	i	ra	cā	ō	dūq ule dīab
ūōxē	ōāve	ōūōūō q	ū	ūōūē	ūōūē

[illegible][illegible]

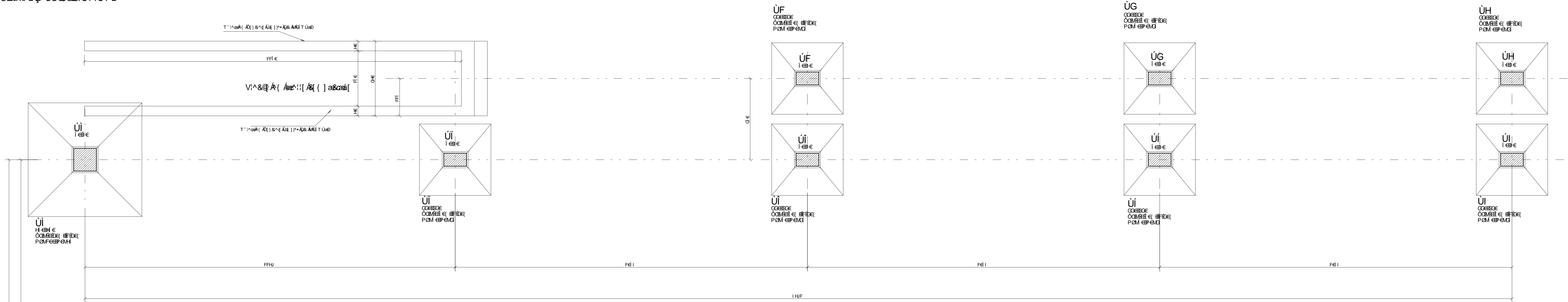
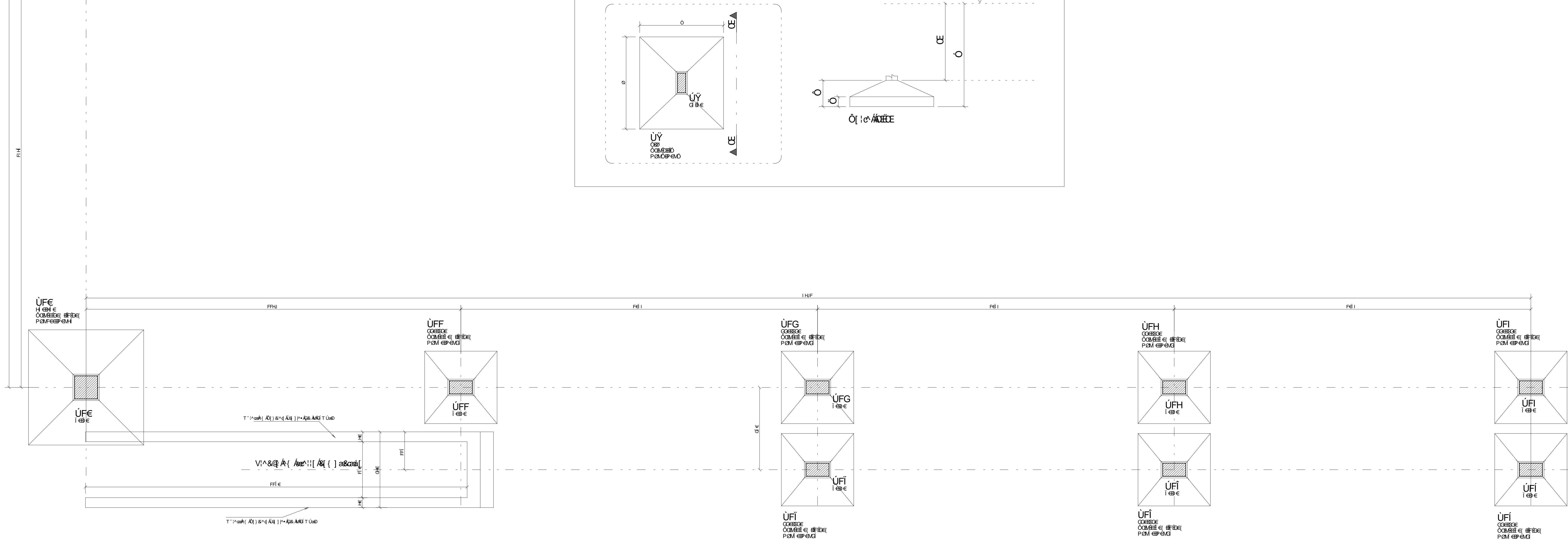
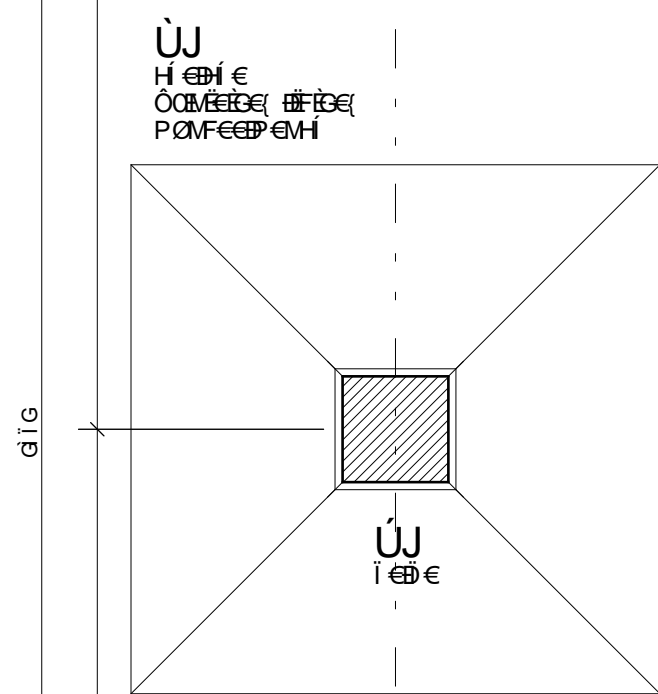
ÓÈÀÀPÀVU  
 ÚÛU RÓVU ÁÓUVÜWÜÖŠ  
 ŠU ÓÖE ¶U ÁÓUÚÁÓŠÖÖÚÖÖÖÁÖÜÖÖÖÖÖ

ὁ δὲ ἀντιφώνησεν αὐτῷ  
 λέγων· ἡμεῖς οὐκ ἔχομεν

0p00P0E0E	U000V0E
ze7a	€€G
0p00P0E0E 0UUVWUUG0E	U0X0YU €€
	00E0

[illegible]

ÒÙÔÊËÊ €ÁΤ ÒÖΦΨÀÒΤ ÆÔΤ D

V0E0Š0Z0À0Â0Ë0Ö0À0Á0U0P0U0V¾0P0Q0E0[illegible][illegible]

eI			
eI			
eI			
eH			
eS			
eF			
ee	Irl eorpu	Or dæmædæð	Uppræð
ÙXÉ	ÓÐVCE	ÓÐÚÓÐ ÆU	ÚÐÚÚÉ

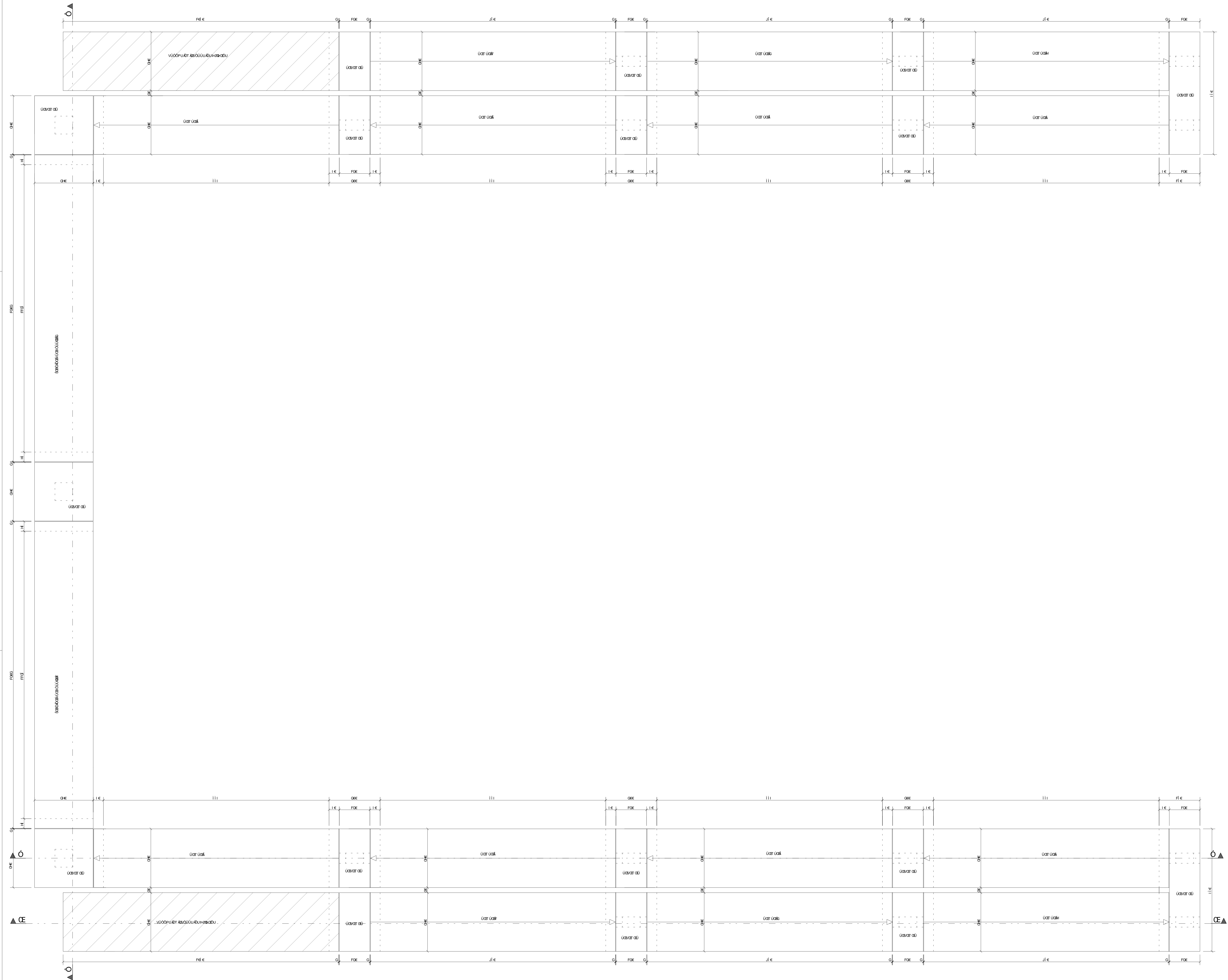
[illegible][illegible]

0E0&P-VU  
 ÚÛÛRÓVUÁÖÜVÜWWWÜÖŠ  
 ÚŠÖP-VÖÖÖÁÖPÖÖP ( ÖÜ

ὁ δὲ ἀποκρίσας εἶπεν αὐτοῖς·  
 ὁ ἄνθρωπος οὗτος ἐστὶν ὁ υἱὸς τοῦ ἀνθρώπου·

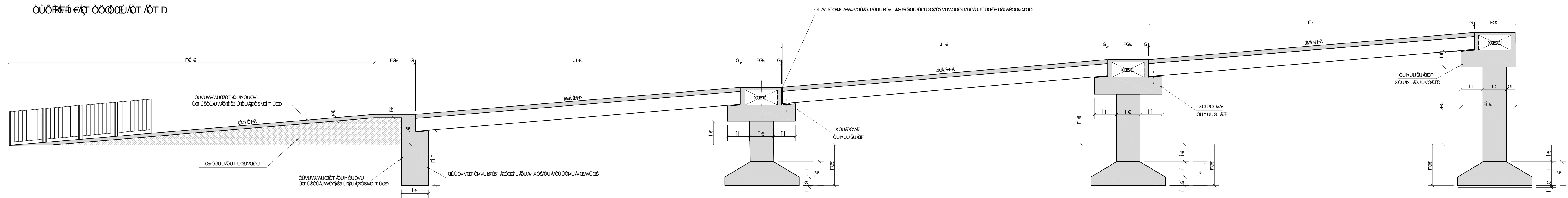
[illegible]



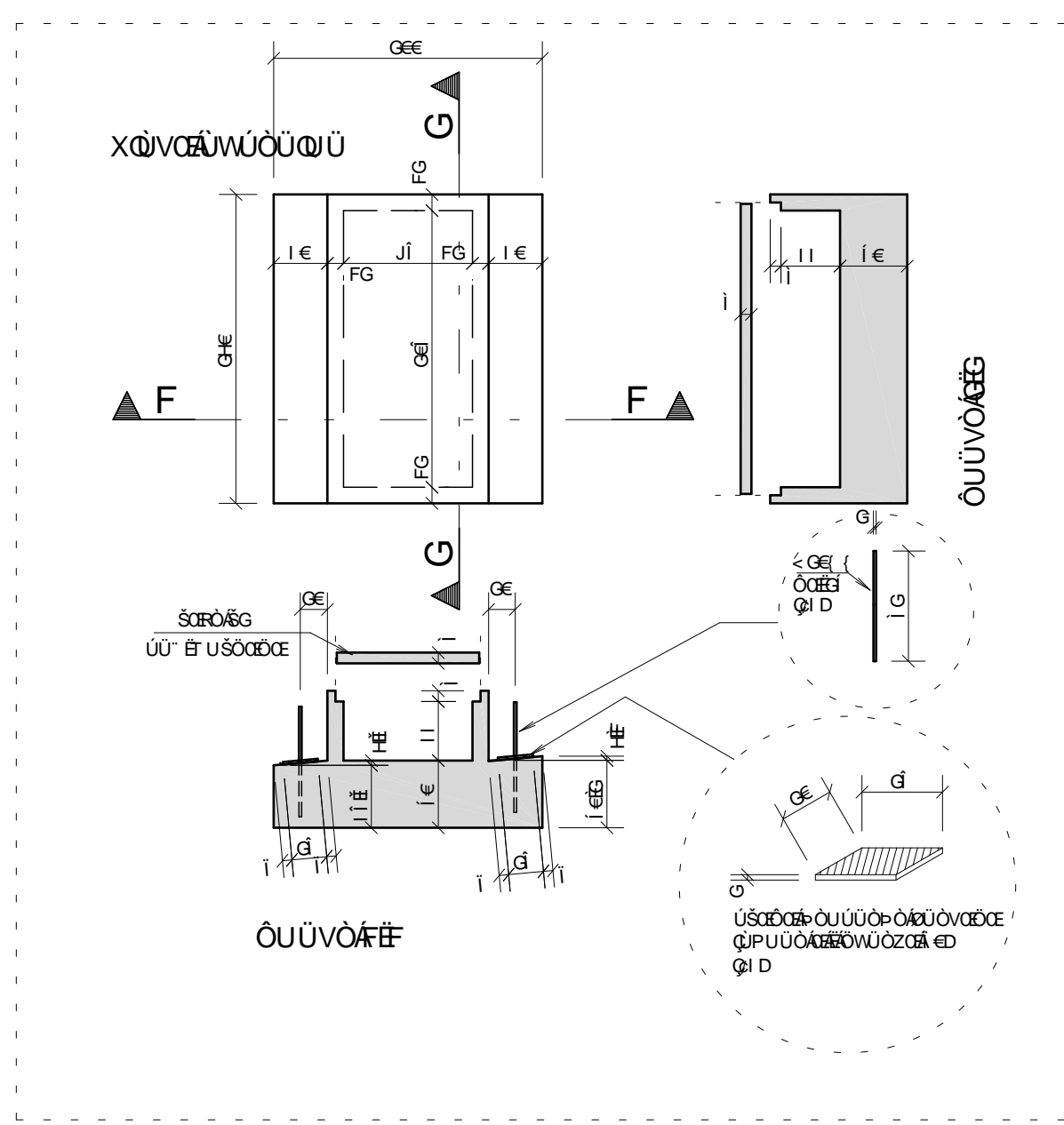


e1			
e2			
e3			
e4			
e5			
e6			
e7			
e8			
e9			
e10			
e11			
e12			
e13			
e14			
e15			
e16			
e17			
e18			
e19			
e20			
e21			
e22			
e23			
e24			
e25			
e26			
e27			
e28			
e29			
e30			
e31			
e32			
e33			
e34			
e35			
e36			
e37			
e38			
e39			
e40			
e41			
e42			
e43			
e44			
e45			
e46			
e47			
e48			
e49			
e50			
e51			
e52			
e53			
e54			
e55			
e56			
e57			
e58			
e59			
e60			
e61			
e62			
e63			
e64			
e65			
e66			
e67			
e68			
e69			
e70			
e71			
e72			
e73			
e74			
e75			
e76			
e77			
e78			
e79			
e80			
e81			
e82			
e83			
e84			
e85			
e86			
e87			
e88			
e89			
e90			
e91			
e92			
e93			
e94			
e95			
e96			
e97			
e98			
e99			
e100			

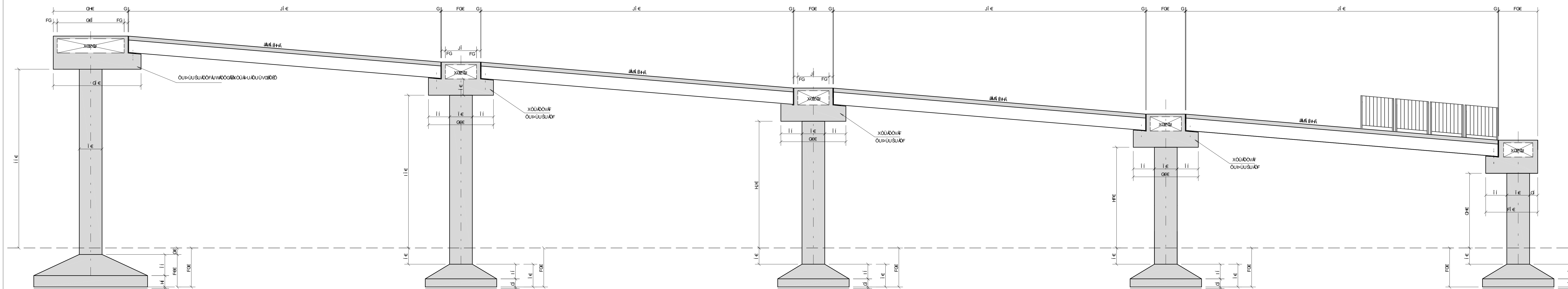
ÒÙÔÊÆƒ€ÀŦ ÒÖŦœÀŦ /Ŧ D



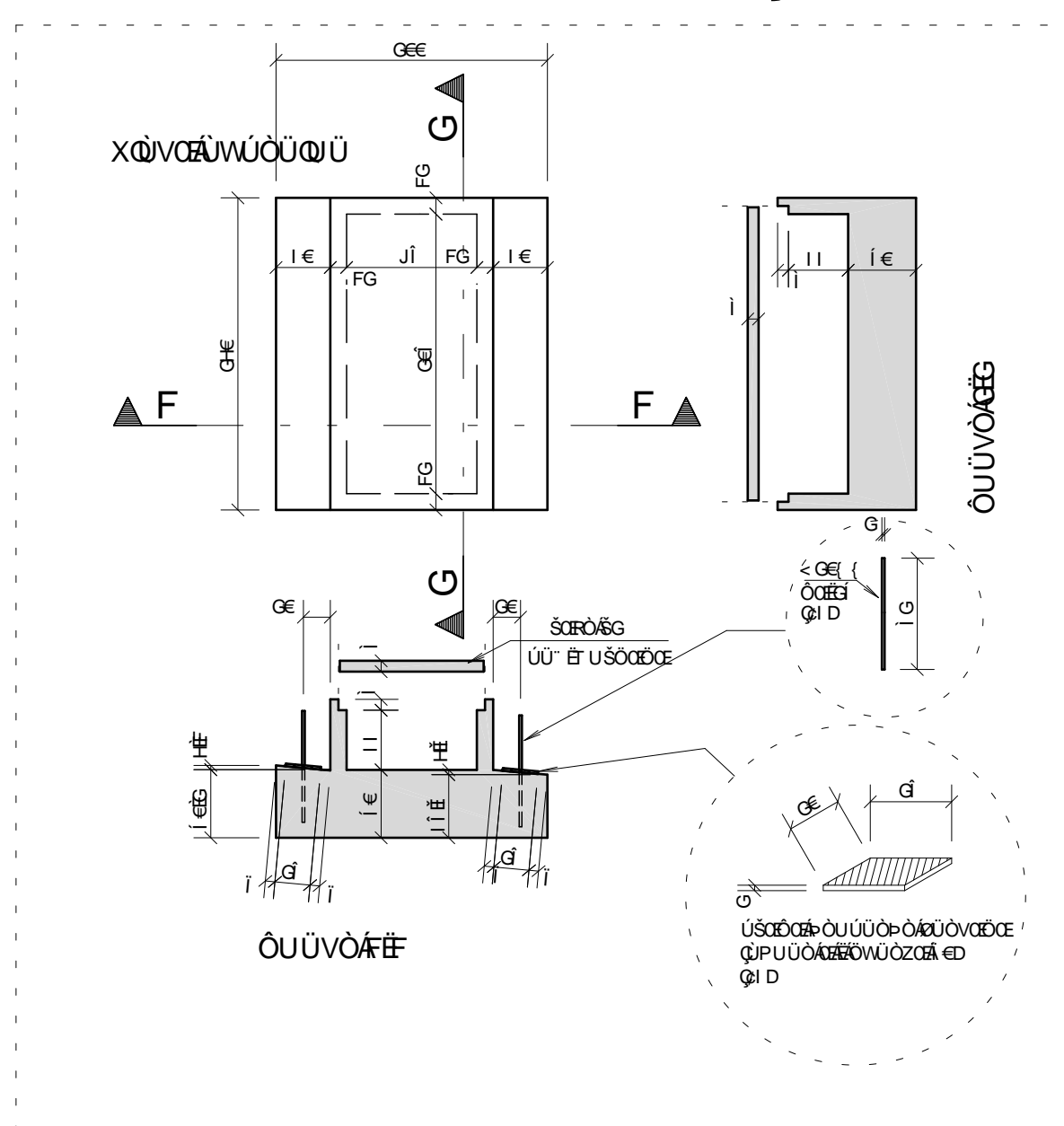
ÖÖVÖŠPÒÁFÁÔUǾÙUŠUÁŒÁÇI D



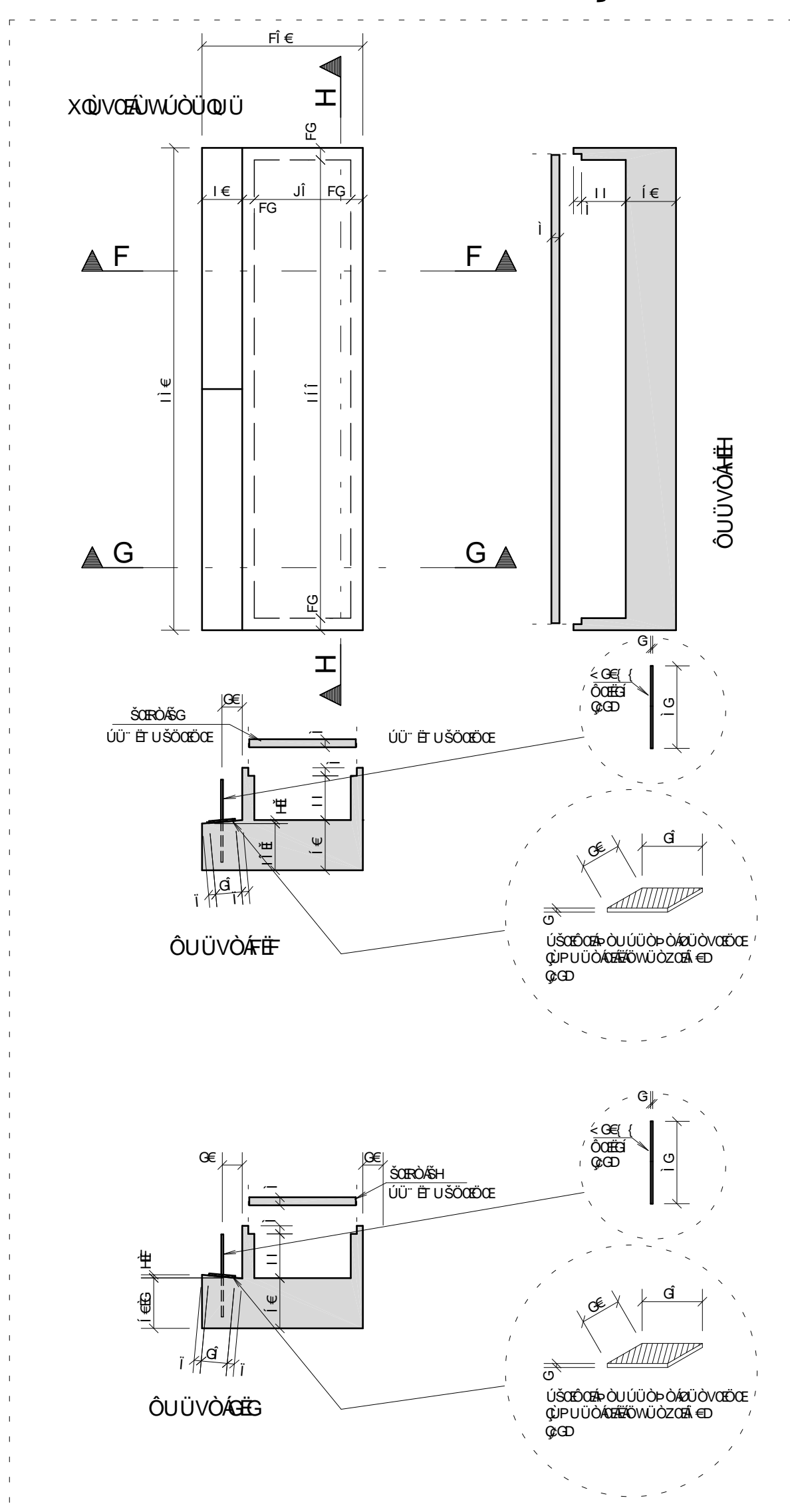
0000000000  
 0000000000



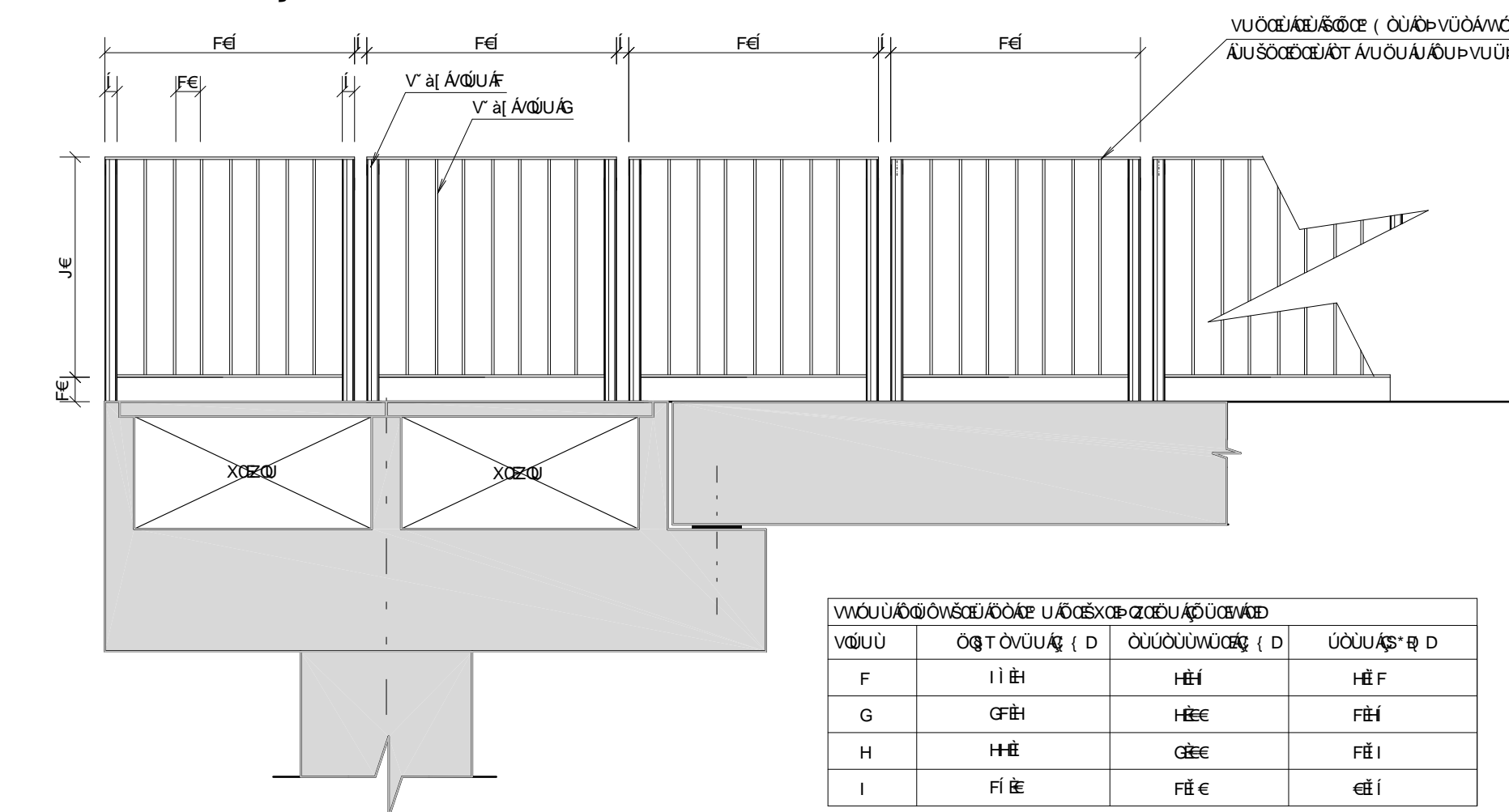
ÖÖVÖŠPÒÁFÍÓUÞÚUŠUÁÓFÁÇÎD



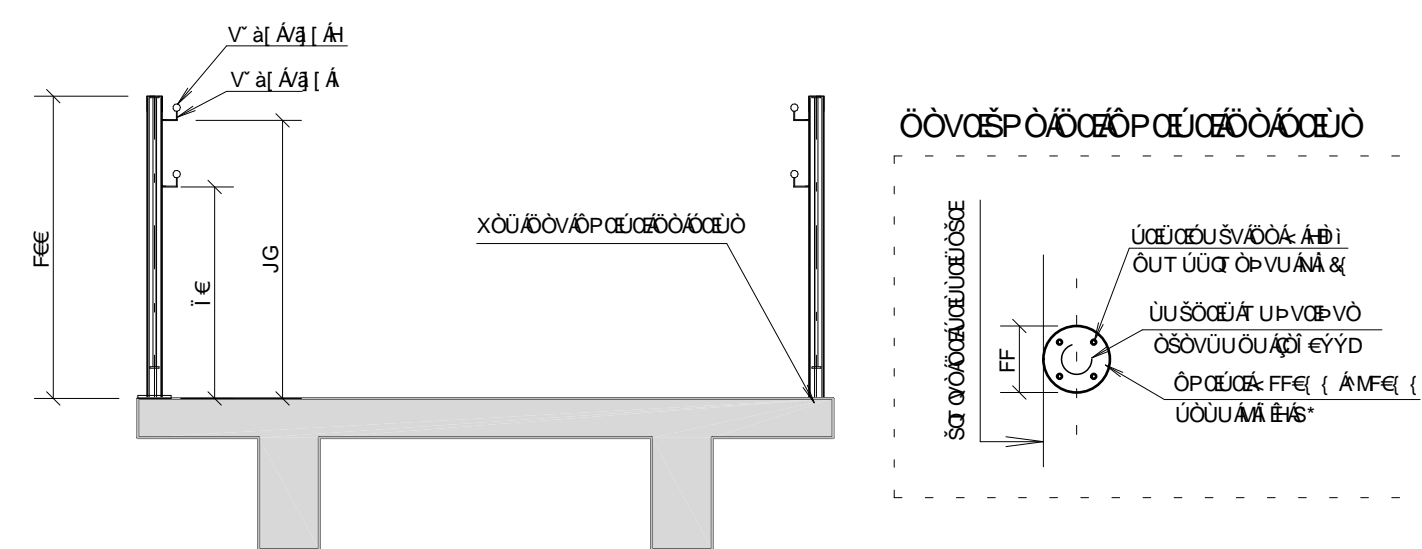
ÖÖV0ĚPÒÁGĤUᐅÙUŠUÁĖFÁÇGD



00V0SP0A0UEX0E0E0P00E0U0U0V0U0U0E  
0Ù0Ô0Š0K0F0E0Ā0T0Ô0Ô0E0Ā0T0Ā0T0D



00VSP0AU0UUUQ || UAUZAUUPOE  
0U0CS0AF0I 4T 0000U0T 0T D



Ú@VWÜØK

[illegible]

WOUUWQWVSEUADQAE UADQSEBQZEUADQWVSEUADQ	QWGTQWUWQ (D	QWUWUWQWQ (D	UQUWQWQ (D
F	11 11	HEH	HE F
G	GF 11	HEE	FEH
H	HEE	GEH	FEH
I	FE 11	FE E	GEH

e			
é			
a			
æ			
œ			
er			
er	ri arant	or du r'wibedās	i oarabō
ūāē	lōrurē	lōrūrōūēsu	lōrūrōē

UOÖE	
Účel účtu je:	účet na účel výdavkov z rozpočtového fondu ÚOÖE na údržbu objektov ÚOÖE

[illegible]

ÜÜÜRÖVUAÖUVÜWWWÜSŠ  
ÖUÜVÖÜ

ὁ δὲ ἀποδοῦναι οὐκ ἐστὶν  
 ὁμοῦ μετὰ τοῦ λαλοῦντος  
 ὁμοῦ μετὰ τοῦ ἀποδοῦναι

ÖP-ÖÖP-PÖEÜDE

ze7a

OP OCP P OUKOE  
OÙVŪWVWŪOŠ

T ODOGA AKIUS

ಇಲ್ಲಿ $\alpha = 0.05$ ಮತ್ತು $d = 1$ ಆಗಿದೆ		ಫಲಿತಾಂಶ	
$\alpha = 0.05$ ಮತ್ತು $d = 1$ ಆಗಿದೆ	0.05	0.05	0.05
$\alpha = 0.05$ ಮತ್ತು $d = 1$ ಆಗಿದೆ	0.05	0.05	0.05

	ÜÜÜÜÜÜ
	ÜÜÜÜÜÜ

---

---

---

ÚČETNÍ VĚC

€€  
 00x@1 U  
 €€

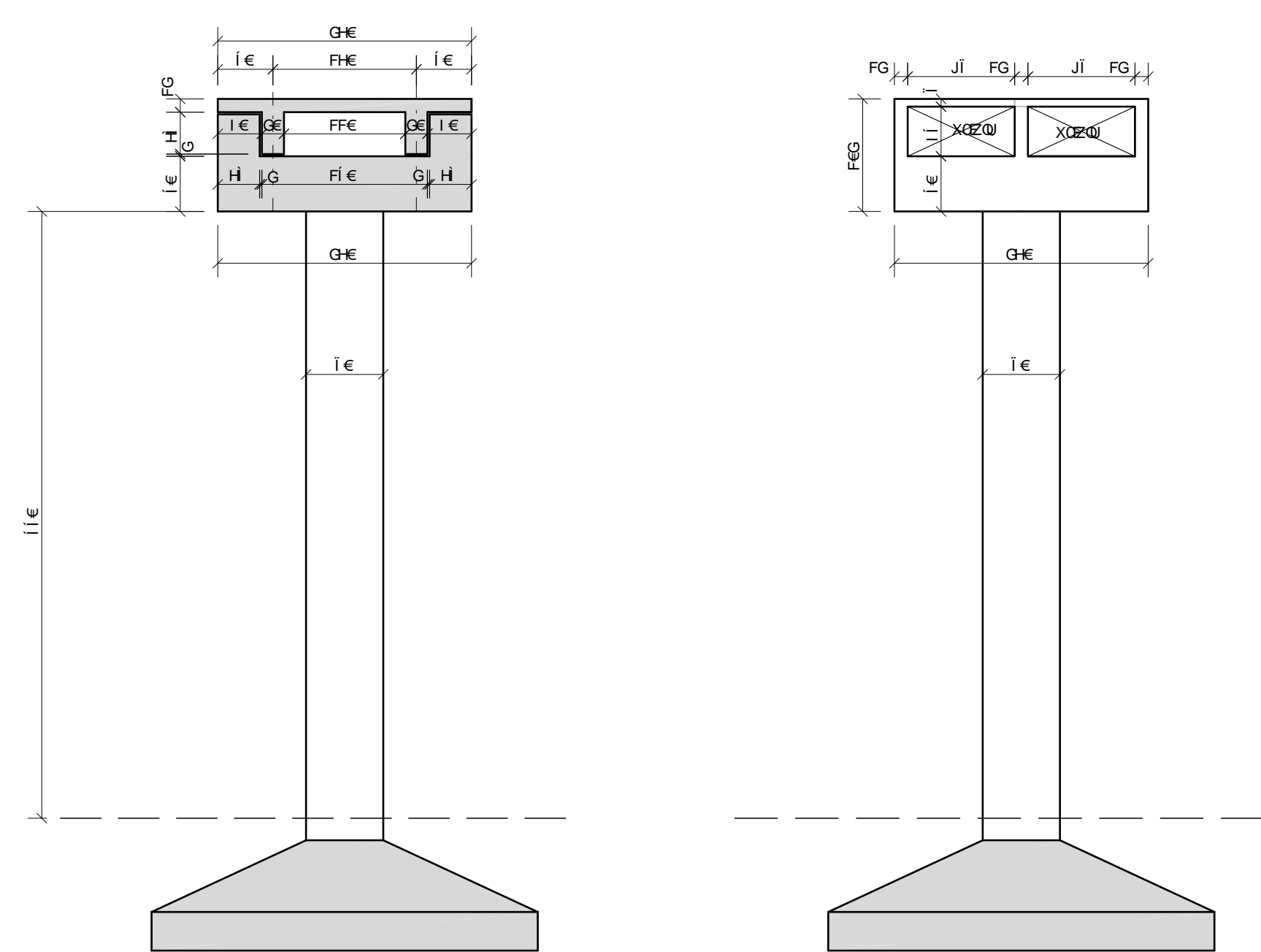
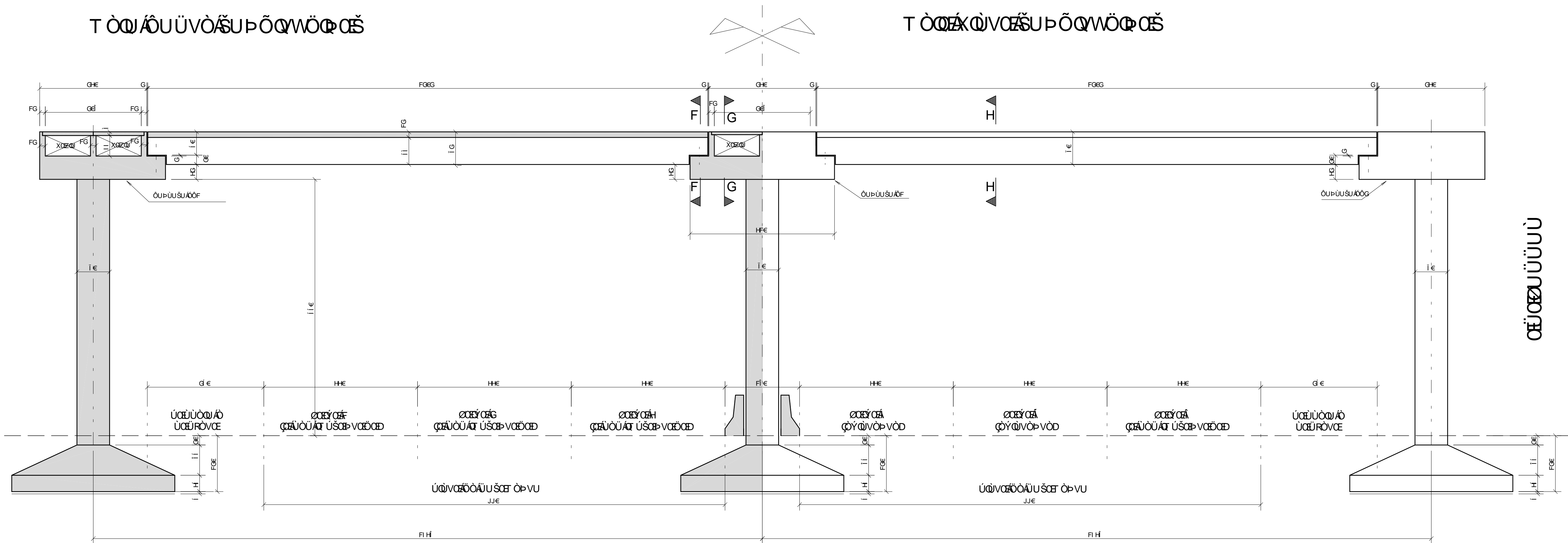
QUELLO

000000

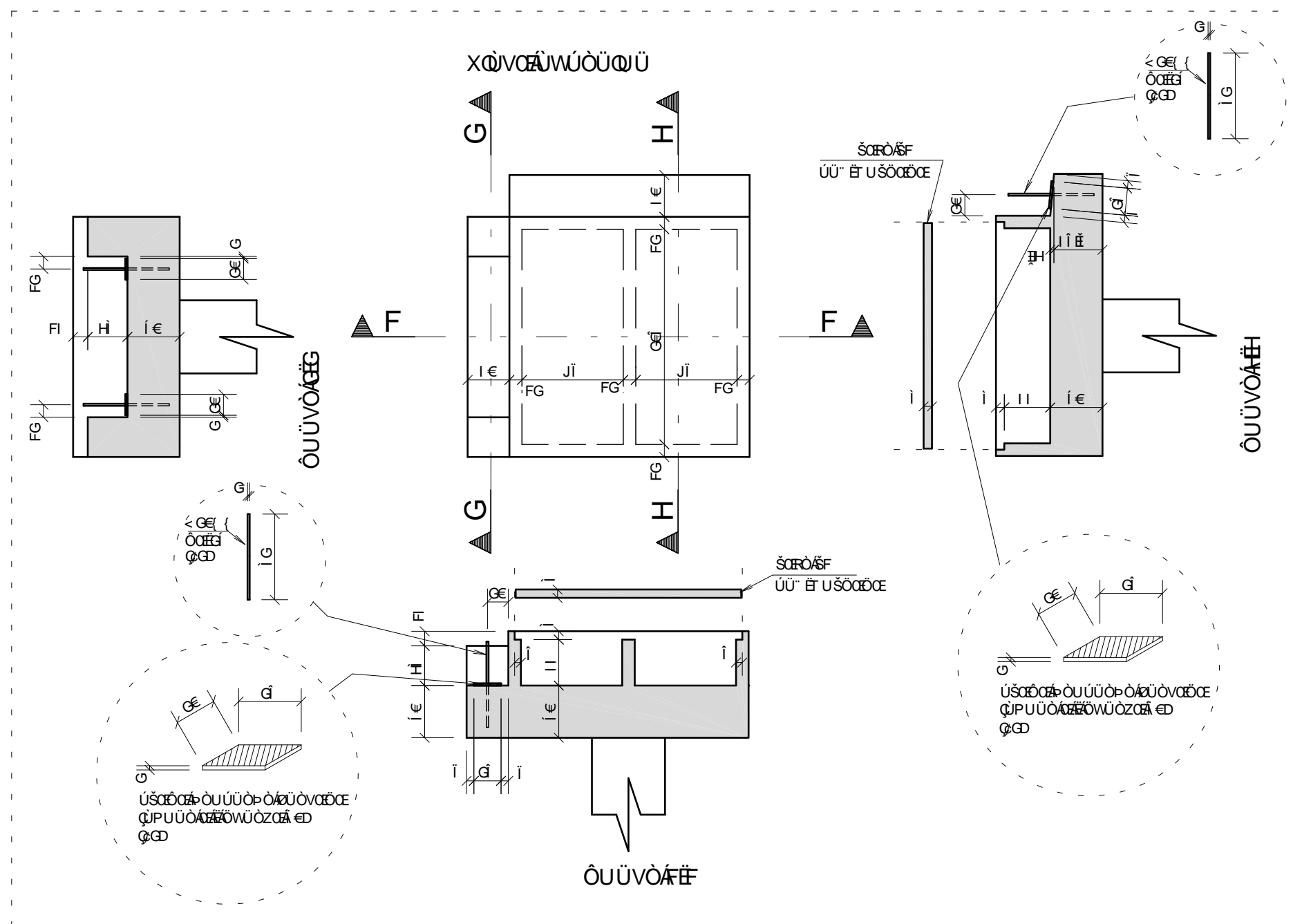
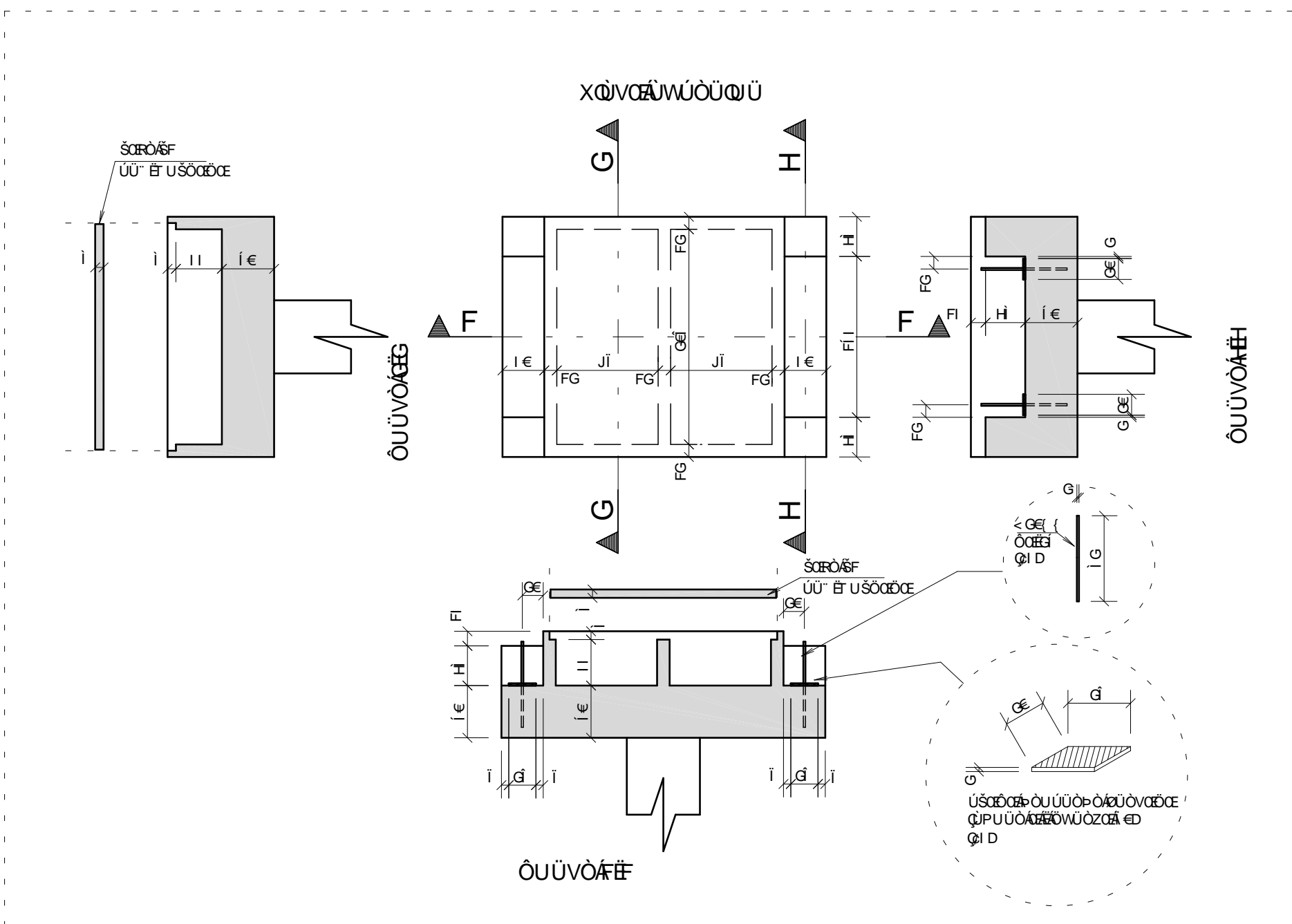
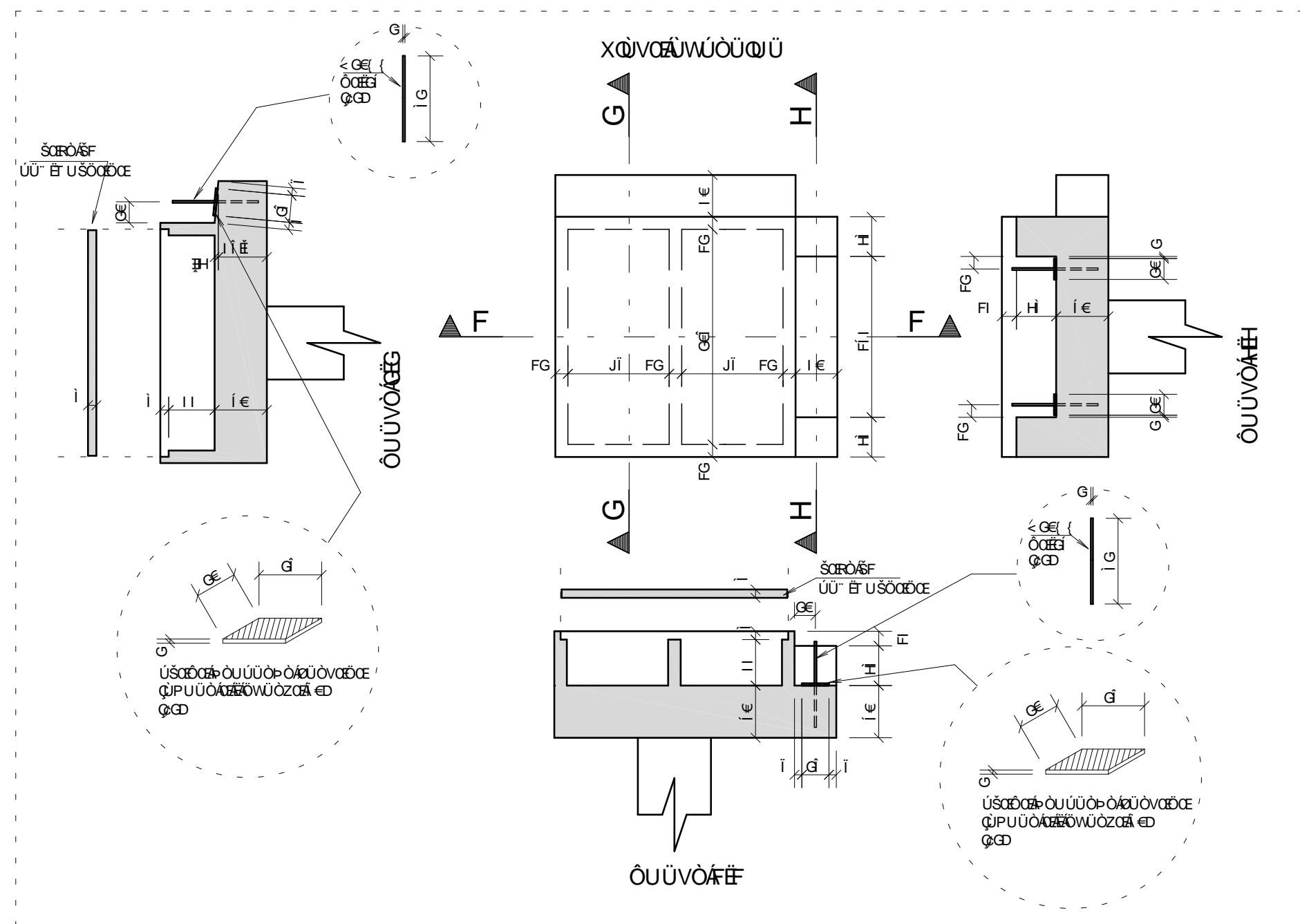
[illegible]

ÒÙÔÊÄÉÉ€ÁÇ ÒÖÖÖËÀÒÔ ÁÔÔÔ

T ÒQǼQ ÌVQǼŠUǾŌQWÖQǾŠ

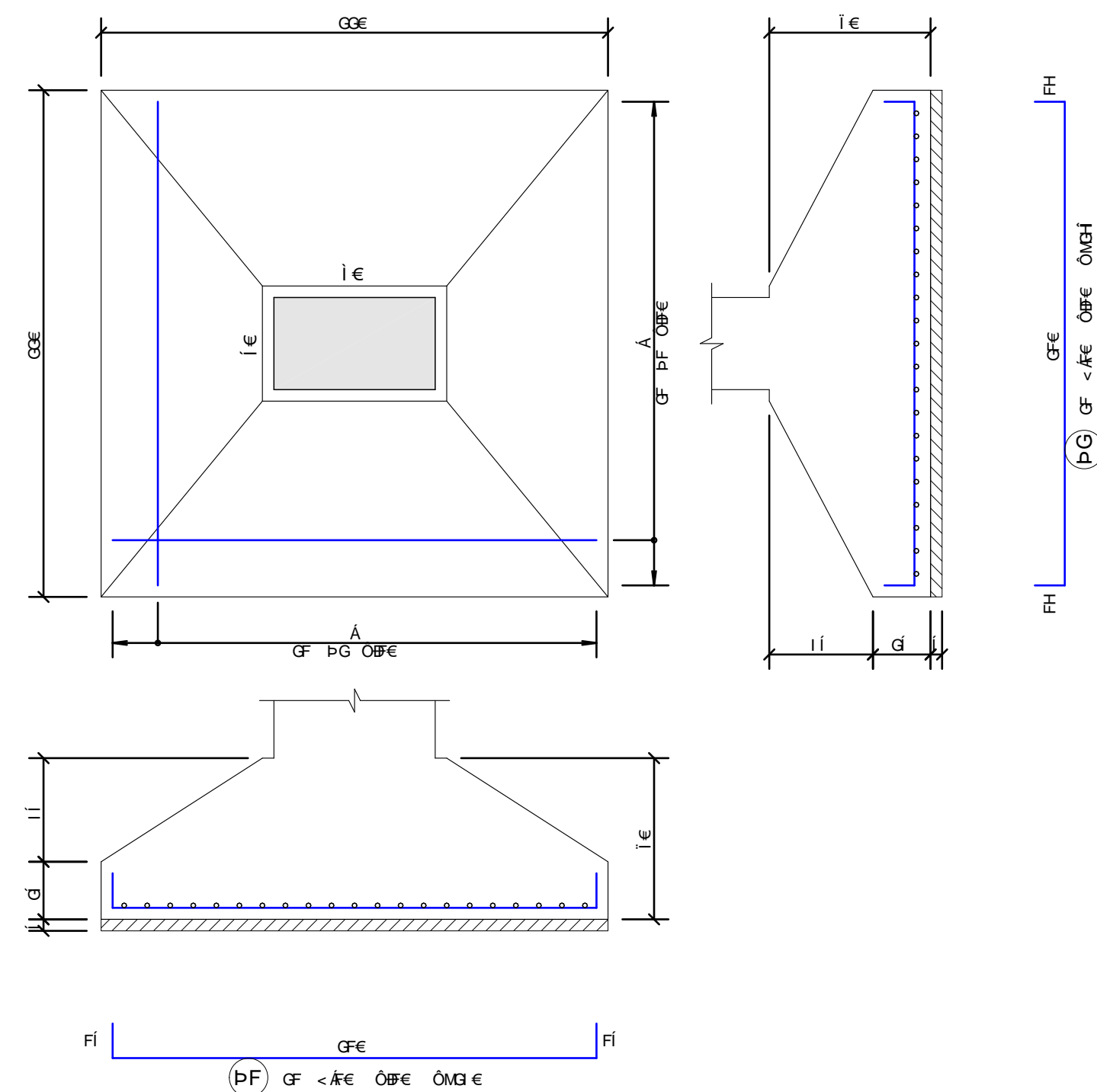


ÖÖVÖŠPÒÁGĀUᐅÙUŠUÁŦ

[illegible]

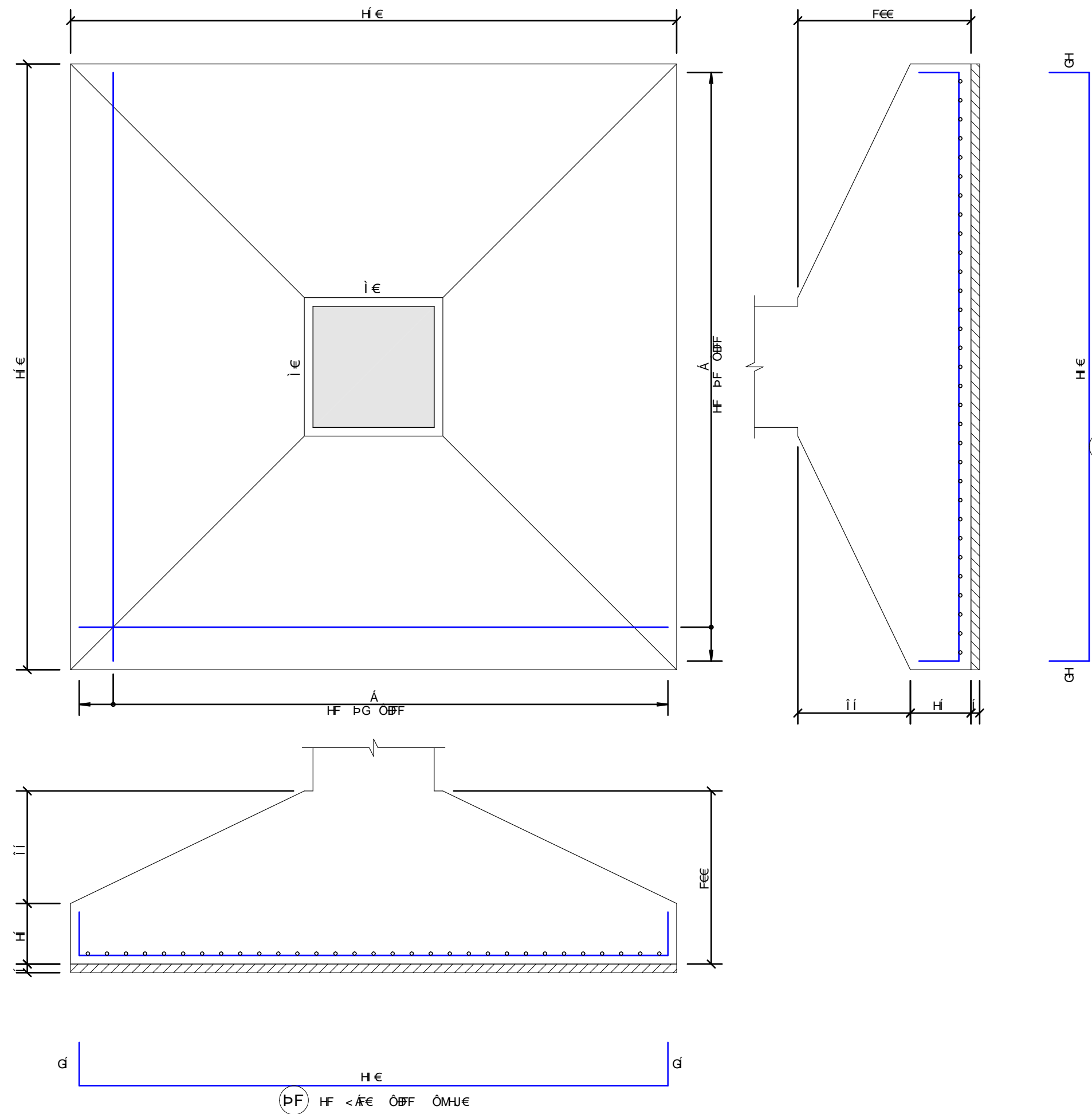
ÜFMÜGMÜHMÜI MÜJ MÜJ MÜJ MÜJ MÜFFMÜFGMÜFHMÜFI MÜFÍ MÜFÎ MÜFÏ

FI Y



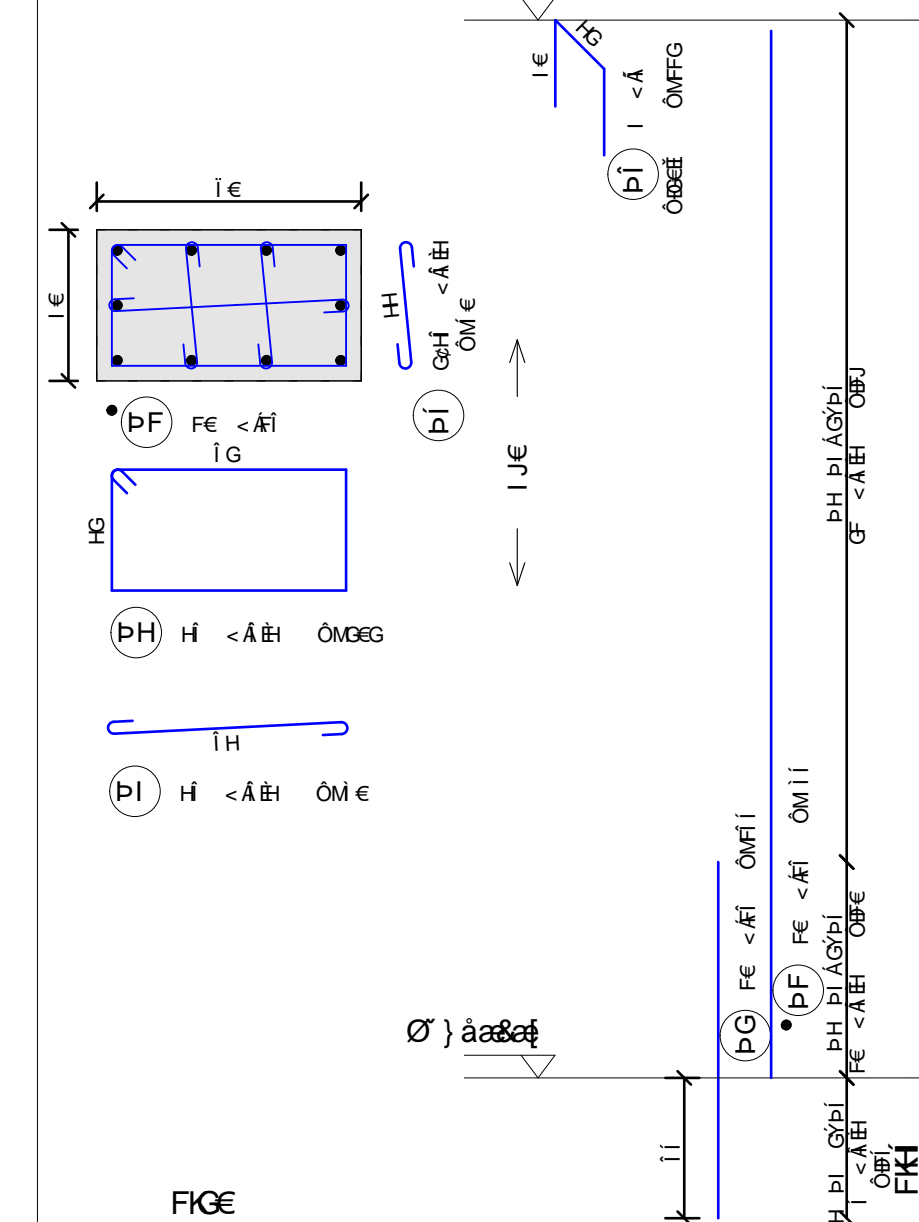
ÙÌ ÁÂÛÁÂÛ€

HÝ



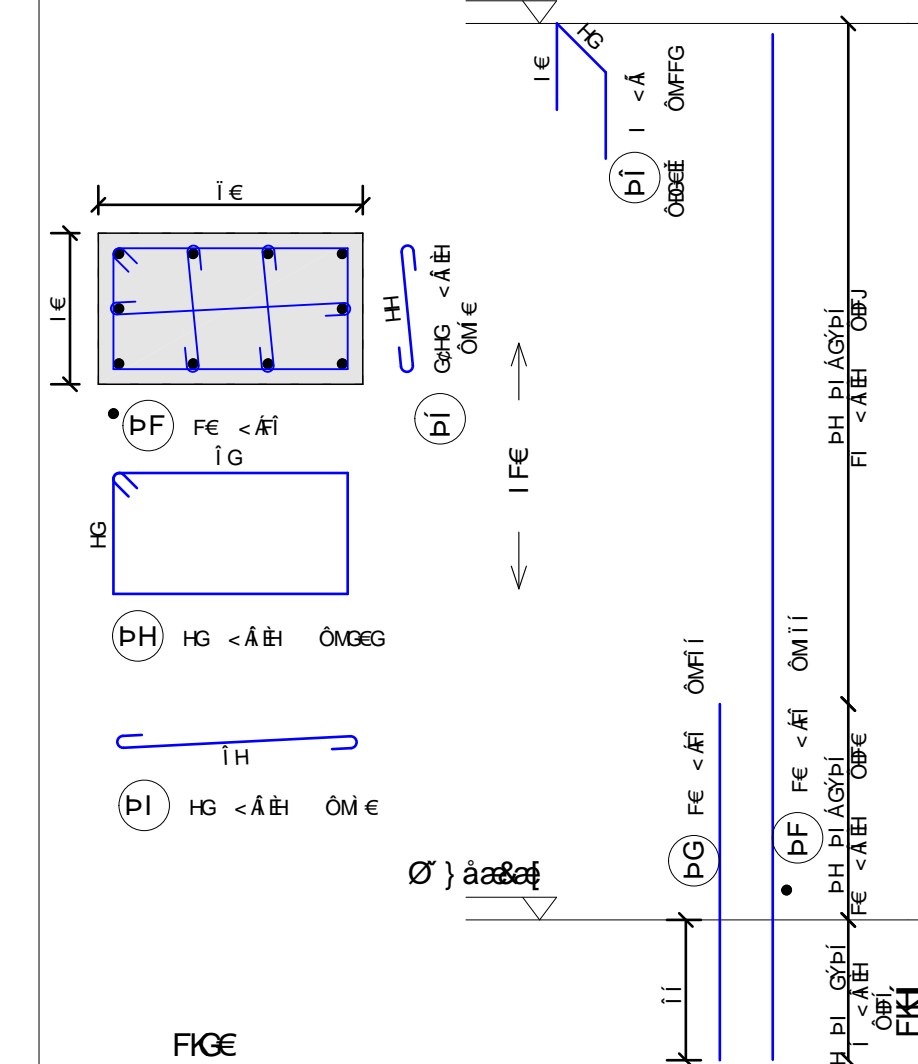
ÚFÁMŪÎ ÁMŪFGÁMŪFĪ  
LÝ

• •

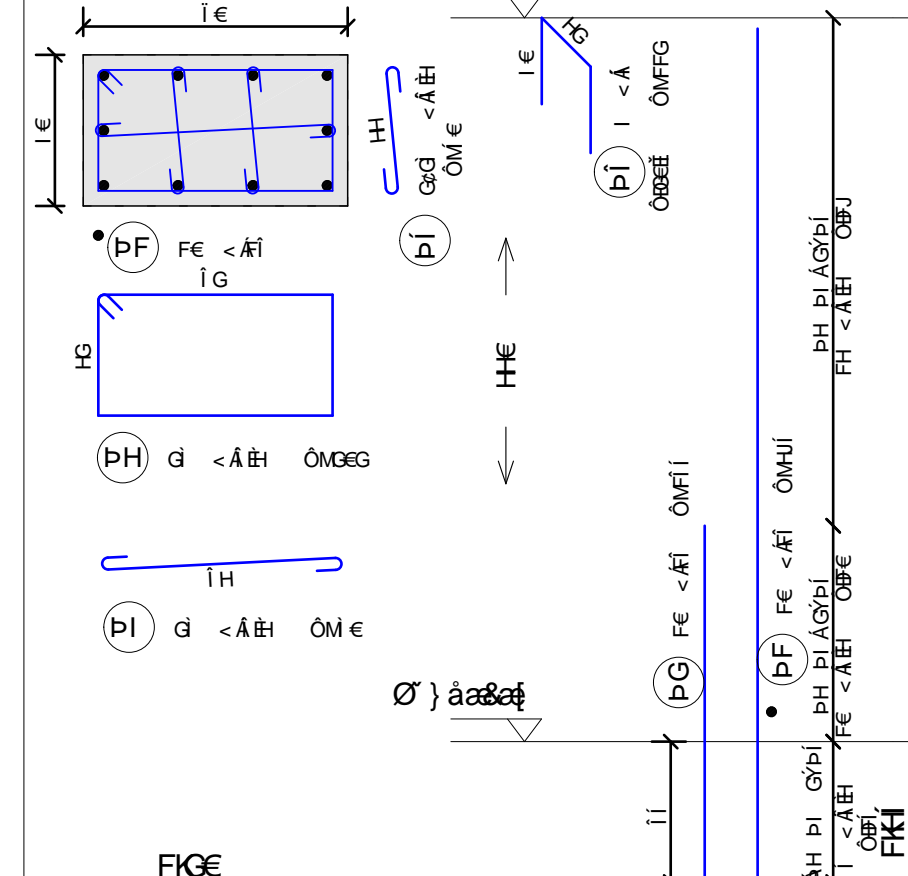


ÚGÁÚÍ ÁÚFHÁÚFÎ

11

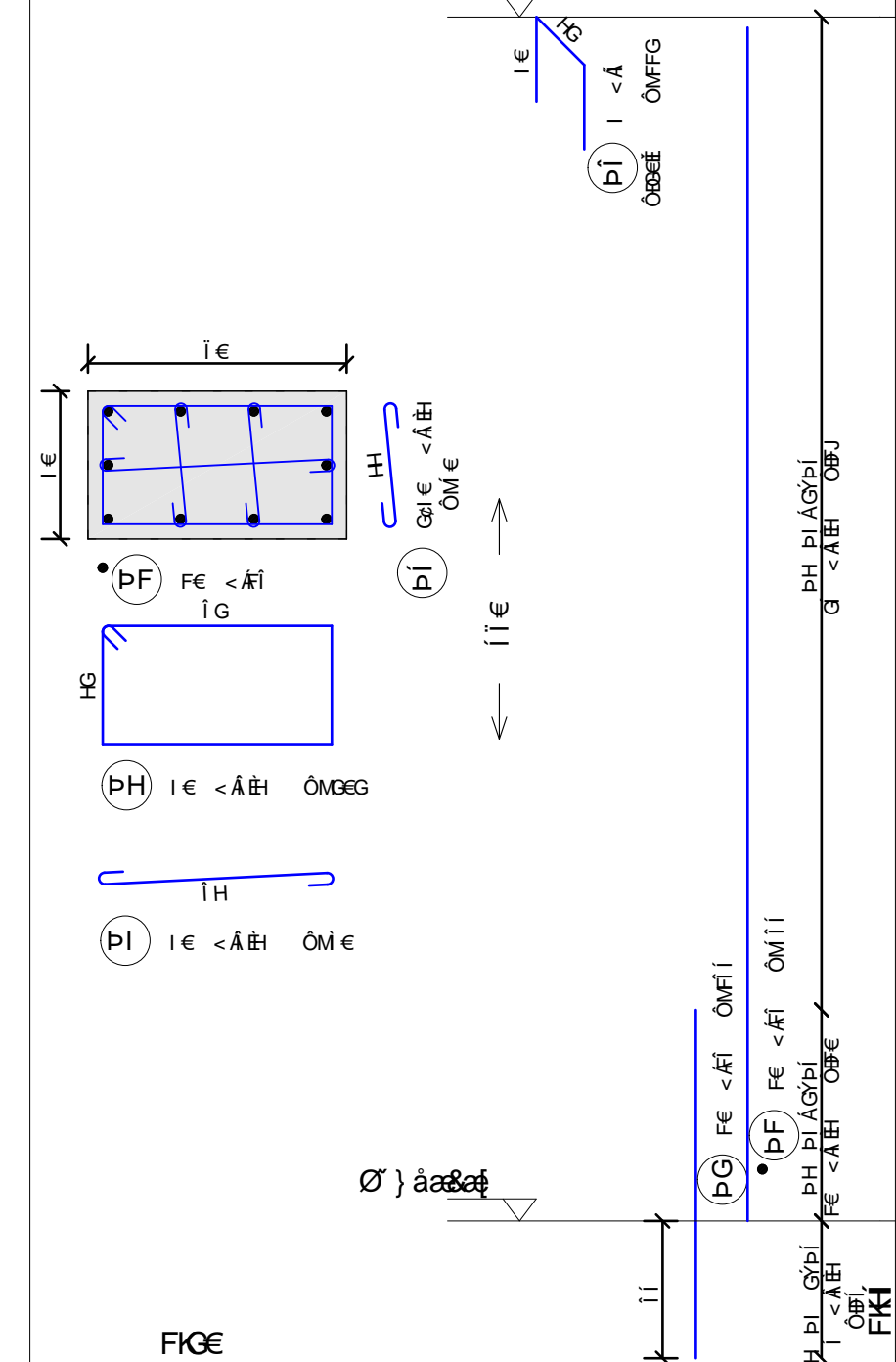


ÚHÁMŮÍ ÁMŮFÍ ÁMŮFÍ  
LÝ



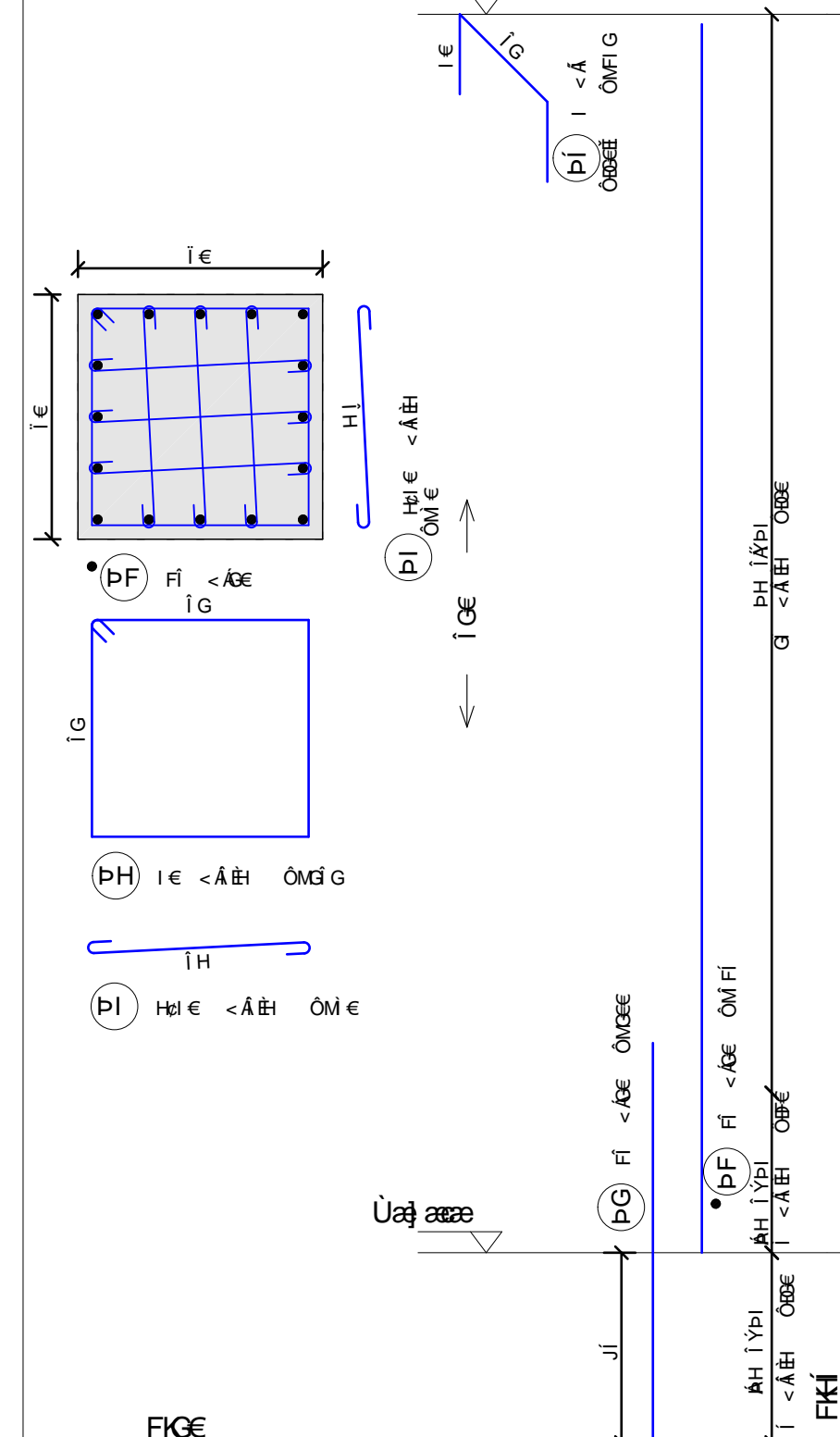
Úĭ ÁMÚFFĂŠə &• ÁFĂĖ

100



ÚÌ ÁÁÚÁÁÚƒ€Š &^• ÁÁÁÁ  
L'Y

...

[illegible]

UOÜUT UÄE UÄÖÖÄ ÜÜ €				
CE U	ÖY q d	ÖUT U q d	ÜÜÜ C d	
ÄÄÄ ÖÖ	ÄÄÄ	ÄÄÄ €	ÄÄÄ ÖÖ	
ÄÄÄ ÖÖE	ÄÄÄ E	ÄÄÄ3 i H	ÄÄÄ i G	
ÄÄÄ ÖÖE	ÄÄÄ €Ä	ÄÄÄ3 F G	ÄÄÄ HÜ	
ÄÄÄ ÖÖE	ÄÄÄ i	ÄÄÄ i i i	ÄÄÄ HÜ i	
ÄÄÄ ÖÖE	ÄÄÄ €Ä	ÄÄÄ €UF	ÄÄÄ i i	
UÄÄ / Ä /	ÖYÄÄÄÄÄÄÄÄ	ÖÖM /	ÄÄÄ €Ä	
UÄÄ / Ä /	ÖYÄÄÄÄÄÄÄÄ	ÖÖM /	ÄÄÄ H3 Ä	

e				
e				
e				
eh				
eg				
ec				

ÜÖXI

U O U E

05AFF6DCEC0ED8B5DUEU

Özet

U00Z00U00V00E00U00U00U00P0000U00U00U00U00P0XUSXQ 0P0VU0W000P0U0E0V0U0P0U0E

ÚÚURÒUÁÒÌVÜWWWÜÖŠ

DATE RECEIVED

UČO: 061609AESP-0606U

UHAMDI AMUFI AMUFI  
UHAMDI AMUFI AMUFI

UI AMWÄNFE

© 2006 The Authors  
Journal compilation © 2006 Blackwell Publishing Ltd

ZE/a

[illegible]

Ταξινομήσεις	Ουδέτερη
--------------	----------

Q1) 2010-11-12-13-14-15-16-17-18-19-20-21-22-23-24-25-26-27-28-29-30-31-32-33-34-35-36-37-38-39-40-41-42-43-44-45-46-47-48-49-50-51-52-53-54-55-56-57-58-59-60-61-62-63-64-65-66-67-68-69-70-71-72-73-74-75-76-77-78-79-80-81-82-83-84-85-86-87-88-89-90-91-92-93-94-95-96-97-98-99-100-101-102-103-104-105-106-107-108-109-110-111-112-113-114-115-116-117-118-119-120-121-122-123-124-125-126-127-128-129-130-131-132-133-134-135-136-137-138-139-140-141-142-143-144-145-146-147-148-149-150-151-152-153-154-155-156-157-158-159-160-161-162-163-164-165-166-167-168-169-170-171-172-173-174-175-176-177-178-179-180-181-182-183-184-185-186-187-188-189-190-191-192-193-194-195-196-197-198-199-200-201-202-203-204-205-206-207-208-209-210-211-212-213-214-215-216-217-218-219-220-221-222-223-224-225-226-227-228-229-230-231-232-233-234-235-236-237-238-239-240-241-242-243-244-245-246-247-248-249-250-251-252-253-254-255-256-257-258-259-260-261-262-263-264-265-266-267-268-269-270-271-272-273-274-275-276-277-278-279-280-281-282-283-284-285-286-287-288-289-290-291-292-293-294-295-296-297-298-299-300-301-302-303-304-305-306-307-308-309-310-311-312-313-314-315-316-317-318-319-320-321-322-323-324-325-326-327-328-329-330-331-332-333-334-335-336-337-338-339-340-341-342-343-344-345-346-347-348-349-350-351-352-353-354-355-356-357-358-359-360-361-362-363-364-365-366-367-368-369-370-371-372-373-374-375-376-377-378-379-380-381-382-383-384-385-386-387-388-389-390-391-392-393-394-395-396-397-398-399-400-401-402-403-404-405-406-407-408-409-410-411-412-413-414-415-416-417-418-419-420-421-422-423-424-425-426-427-428-429-430-431-432-433-434-435-436-437-438-439-440-441-442-443-444-445-446-447-448-449-450-451-452-453-454-455-456-457-458-459-460-461-462-463-464-465-466-467-468-469-470-471-472-473-474-475-476-477-478-479-480-481-482-483-484-485-486-487-488-489-490-491-492-493-494-495-496-497-498-499-500-501-502-503-504-505-506-507-508-509-510-511-512-513-514-515-516-517-518-519-520-521-522-523-524-525-526-527-528-529-530-531-532-533-534-535-536-537-538-539-540-541-542-543-544-545-546-547-548-549-550-551-552-553-554-555-556-557-558-559-560-561-562-563-564-565-566-567-568-569-570-571-572-573-574-575-576-577-578-579-580-581-582-583-584-585-586-587-588-589-590-591-592-593-594-595-596-597-598-599-600-601-602-603-604-605-606-607-608-609-610-611-612-613-614-615-616-617-618-619-620-621-622-623-624-625-626-627-628-629-630-631-632-633-634-635-636-637-638-639-640-641-642-643-644-645-646-647-648-649-650-651-652-653-654-655-656-657-658-659-660-661-662-663-664-665-666-667-668-669-670-671-672-673-674-675-676-677-678-679-680-681-682-683-684-685-686-687-688-689-690-691-692-693-694-695-696-697-698-699-700-701-702-703-704-705-706-707-708-709-710-711-712-713-714-715-716-717-718-719-720-721-722-723-724-725-726-727-728-729-730-731-732-733-734-735-736-737-738-739-740-741-742-743-744-745-746-747-748-749-750-751-752-753-754-755-756-757-758-759-760-761-762-763-764-765-766-767-768-769-770-771-772-773-774-775-776-777-778-779-780-781-782-783-784-785-786-787-788-789-790-791-792-793-794-795-796-797-798-799-800-801-802-803-804-805-806-807-808-809-810-811-812-813-814-815-816-817-818-819-820-821-822-823-824-825-826-827-828-829-830-831-832-833-834-835-836-837-838-839-840-841-842-843-844-845-846-847-848-849-850-851-852-853-854-855-856-857-858-859-860-861-862-863-864-865-866-867-868-869-870-871-872-873-874-875-876-877-878-879-880-881-882-883-884-885-886-887-888-889-890-891-892-893-894-895-896-897-898-899-900-901-902-903-904-905-906-907-908-909-910-911-912-913-914-915-916-917-918-919-920-921-922-923-924-925-926-927-928-929-930-931-932-933-934-935-936-937-938-939-940-941-942-943-944-945-946-947-948-949-950-951-952-953-954-955-956-957-958-959-960-961-962-963-964-965-966-967-968-969-970-971-972-973-974-975-976-977-978-979-980-981-982-983-984-985-986-987-988-989-990-991-992-993-994-995-996-997-998-999-1000-1001-1002-1003-1004-1005-1006-1007-1008-1009-1010-1011-1012-1013-1014-1015-1016-1017-1018-1019-1020-1021-1022-1023-1024-1025-1026-1027-1028-1029-1030-1031-1032-1033-1034-1035-1036-1037-1038-1039-104	
---	--

0Uv8AUS0P-V0# AUUUUU00000000Z0V0A+1UAU00AU0U0U0U0WZ00SUOT &XWUÜZ0E 1UE

ÖÖP-MSAEST ÖÖZGRVÖP UUM/AUSAOUEUÖKEG) EUSSEUT EUEHUSVAD EBFROGFJAFCH FNGF



[illegible]

$\text{pF} \in$ 
 $\text{G} \in$ 
 $\text{A} \in$ 
 $\text{M} \in$ 
 $\text{G}$

$\vdash \text{FF}$  ,  $\text{G} \vdash \text{A} \in \text{OMfi}$

$\text{FG}$

$\text{G}$

IG

FG

IG

FG

ΧΑΙΝΑΣΜΟΥΘΟΥ  
 ΥΟΥΒΑΙΟ\* ΣΥΠΟΘΑΟΥ/Σ ΑΘΑΟΥΤ ΑΙΘΑΟΥΘΟΥΠΟΥΘΑΘΕ

The diagram shows a rectangular race track with a width of 100m. It is divided into 10 lanes by dashed lines. Lane 1 is on the left, and lane 10 is on the right. The start and finish lines are marked with blue dashes at the top and bottom of the track. The start line is at the left end, and the finish line is at the right end. The distance between the start and finish lines is 100m.

The diagrams illustrate various road cross-sections and drainage scenarios:

- Top Diagram:** Shows a road cross-section with a centerline and two side slopes. Labels include  $\frac{1}{2} < A \frac{H}{P_1} A \frac{O}{P_2} F$  and  $G \frac{H}{P_1} < A \frac{H}{P_2} O \frac{H}{P_2} F$ . The text "XOU/DOU/ASIS GROU/OF O P VU" is written on both sides.
- PG Diagram:** A cross-section with a centerline and two side slopes. Labels include  $(PG) G \frac{H}{P_1} < A \frac{H}{P_2} O \frac{H}{P_2} F$  and  $J \frac{H}{P_1}$ .
- FI Diagram:** A cross-section with a centerline and two side slopes. Labels include  $(FI) F \frac{H}{P_1} < A \frac{H}{P_2} O \frac{H}{P_2} F$  and  $J \frac{H}{P_1}$ .
- PI Diagram:** A cross-section with a centerline and two side slopes. Labels include  $(PI) F \frac{H}{P_1} < A \frac{H}{P_2} O \frac{H}{P_2} F$  and  $J \frac{H}{P_1}$ .
- PF Diagram:** A cross-section with a centerline and two side slopes. Labels include  $(PF) G \frac{H}{P_1} < A \frac{H}{P_2} O \frac{H}{P_2} F$  and  $J \frac{H}{P_1}$ .
- PH Diagram:** A cross-section with a centerline and two side slopes. Labels include  $(PH) G \frac{H}{P_1} < A \frac{H}{P_2} O \frac{H}{P_2} F$  and  $J \frac{H}{P_1}$ .
- PJ Diagram:** A cross-section with a centerline and two side slopes. Labels include  $(PJ) G \frac{H}{P_1} < A \frac{H}{P_2} O \frac{H}{P_2} F$  and  $J \frac{H}{P_1}$ .

$\begin{pmatrix} \text{P} \\ \vdots \end{pmatrix}$

The diagram consists of two parts, (a) and (b), illustrating the construction of a sequence of functions.

Part (a) shows a sequence of functions  $f_n$  on the interval  $[0, 1]$ . The functions are defined by a sequence of points  $x_n$  and  $y_n$ . The limit function  $f$  is shown as a dashed line. The functions  $f_n$  are defined by a sequence of points  $x_n$  and  $y_n$ , and the limit function  $f$  is defined by the limit of these points.

Part (b) shows a sequence of functions  $g_n$  on the interval  $[0, 1]$ . The functions are defined by a sequence of points  $x_n$  and  $y_n$ . The limit function  $g$  is shown as a dashed line. The functions  $g_n$  are defined by a sequence of points  $x_n$  and  $y_n$ , and the limit function  $g$  is defined by the limit of these points.

[illegible]

UO'UUT UATÉ U'AO'CHÁ ÉÉ			
CE U	OXY	GU D	U'OUU
	G   D		G'D
AAAA GÓ	AAAA G	AAAA FFG	AAAA ITT
AAAA ECE	AAAA G	AAAA GEI	AAAA XTJ
AAAA ECE	AAAA U	AAAA U	AAAA ITT
AAAA ECE	AAAA H	AAAA H	AAAA ITT
AAAA ECE	AAAA C	AAAA C	AAAA ITT
AAAA ECE	AAAA G	AAAA E	AAAA ITT
U'·A'   A' GGGGGG	GGGGG		AAAA ITA'
U'·A'   A' GGGGGG	GGGGG		AAAA ITA'

[illegible]



